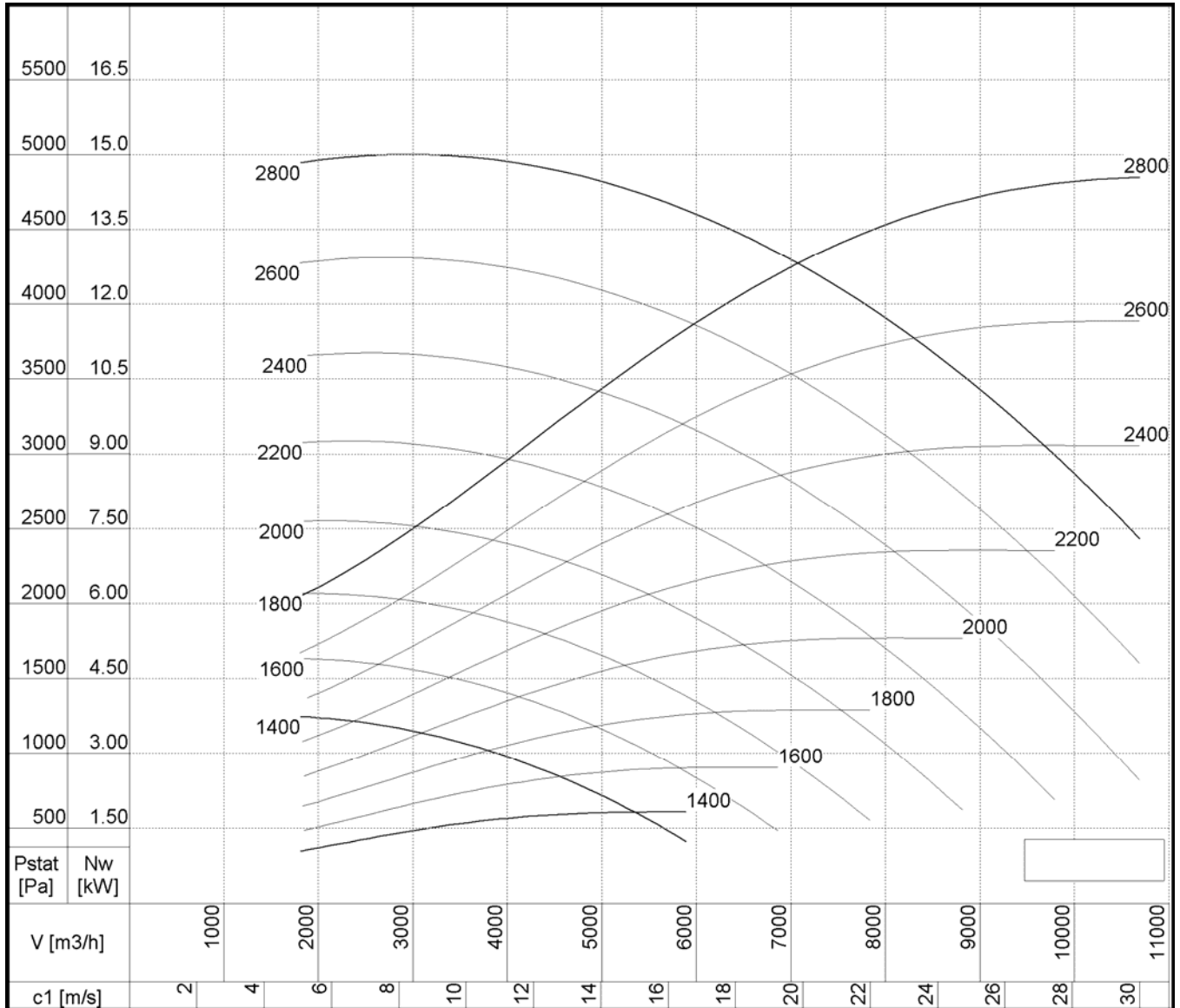


Sound power level L_{wA} dB(A) **Sound pressure $L_{pA} = L_{wA} - 7$ dB(A)** **Dist. 1 m**

ISO 5136.2

n	L_{wA} dB(A)	Hz							
		63	125	250	500	1000	2000	4000	8000
min -1									
1400	75	49	62	69	71	67	63	59	53
1600	77	51	64	71	73	69	65	61	55
1800	80	54	67	74	76	72	68	64	58
2000	82	56	69	76	78	74	70	66	60
2200	84	58	71	78	80	76	72	68	62
2400	86	60	73	80	82	78	74	70	64
2600	88	62	75	82	84	80	76	72	66
2800	90	64	77	84	86	82	78	74	68
3000	91	65	78	85	87	83	79	75	69
3100	92	66	79	86	88	84	80	76	70

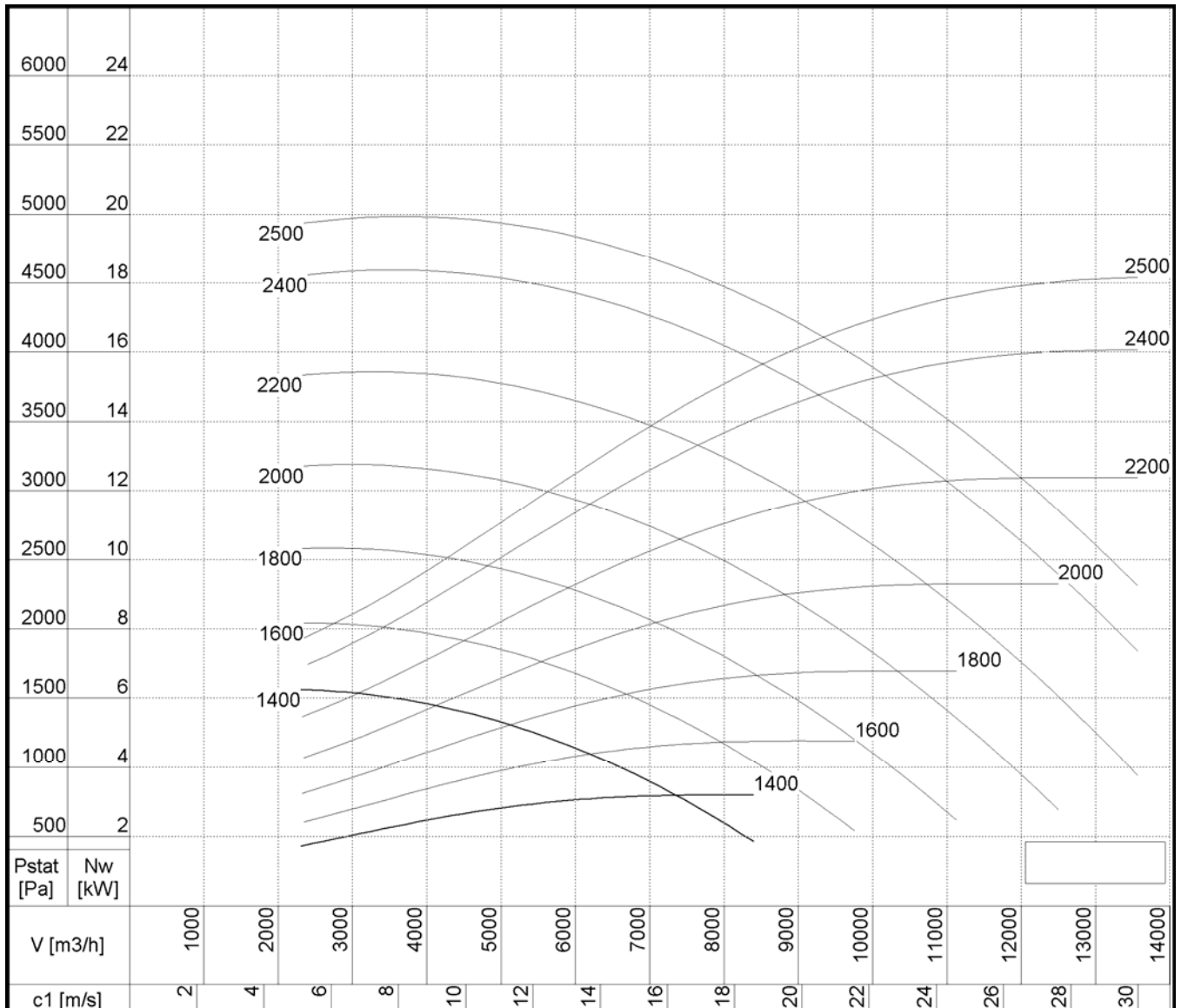




Sound power level L_{wA} dB(A) **Sound pressure $L_{pA} = L_{wA} - 7$ dB(A)** **Dist. 1 m**
 ISO 5136.2

n	L_{wA} dB(A)	Hz							
		63	125	250	500	1000	2000	4000	8000
min -1									
1400	79	58	68	74	75	71	65	61	55
1600	81	60	70	76	77	73	67	63	57
1800	84	63	73	79	80	76	70	66	60
2000	86	65	75	81	82	78	72	68	62
2200	88	67	77	83	84	80	74	70	64
2400	90	69	79	85	86	82	76	72	66
2600	92	71	81	87	88	84	78	74	68
2800	94	73	83	89	90	86	80	76	70

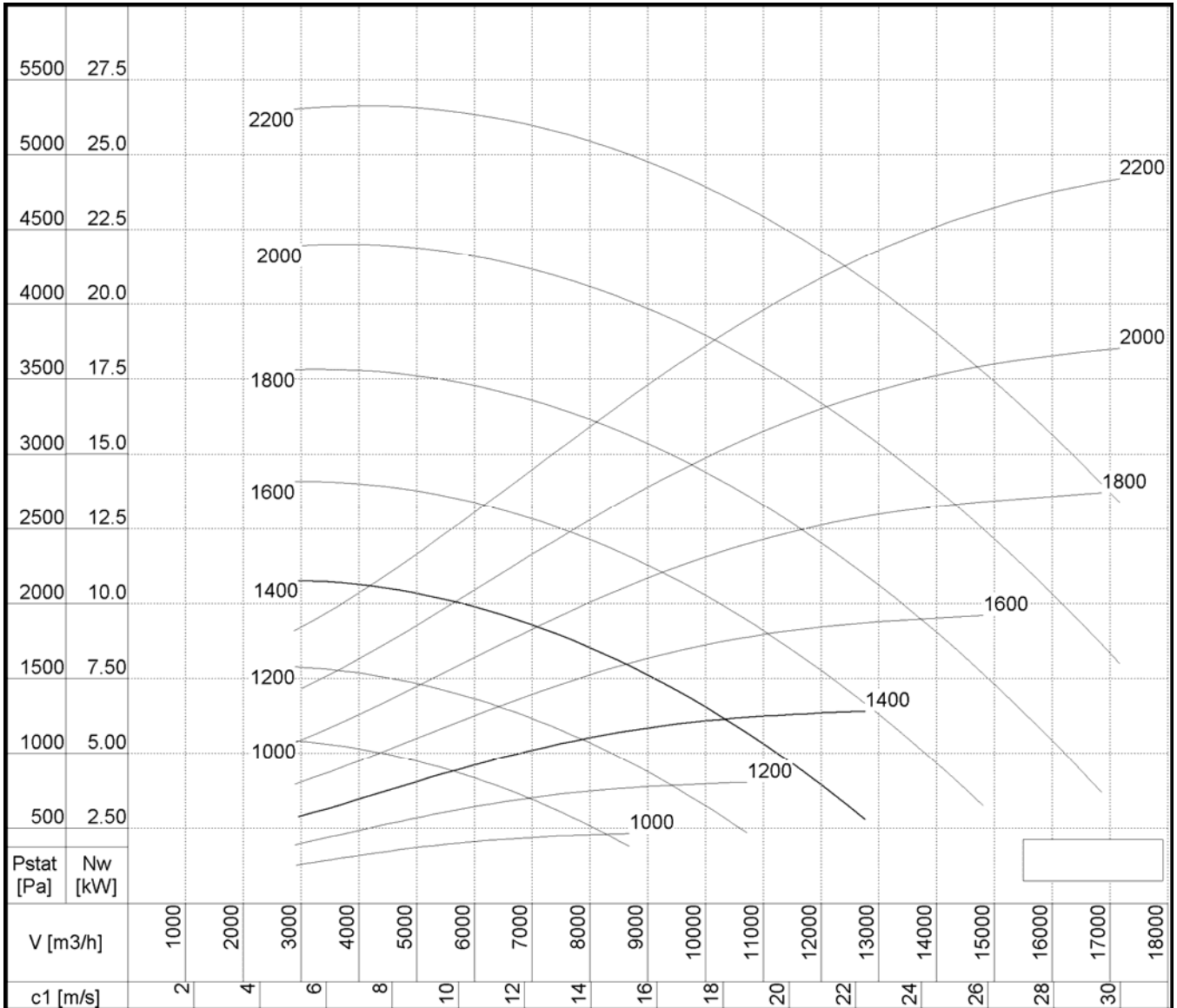




Sound power level L_{wA} dB(A) **Sound pressure $L_{pA} = L_{wA} - 7$ dB(A)** **Dist. 1 m**
 ISO 5136.2

n	L_{wA} dB(A)	Hz							
		63	125	250	500	1000	2000	4000	8000
min -1									
1400	88	51	70	77	85	78	79	79	73
1600	90	53	72	79	87	80	81	81	75
1800	93	56	75	82	90	83	84	84	78
2000	95	58	77	84	92	85	86	86	80
2200	97	60	79	86	94	87	88	88	82
2400	99	62	81	88	96	89	90	90	84
2500	100	63	82	89	97	90	91	91	85

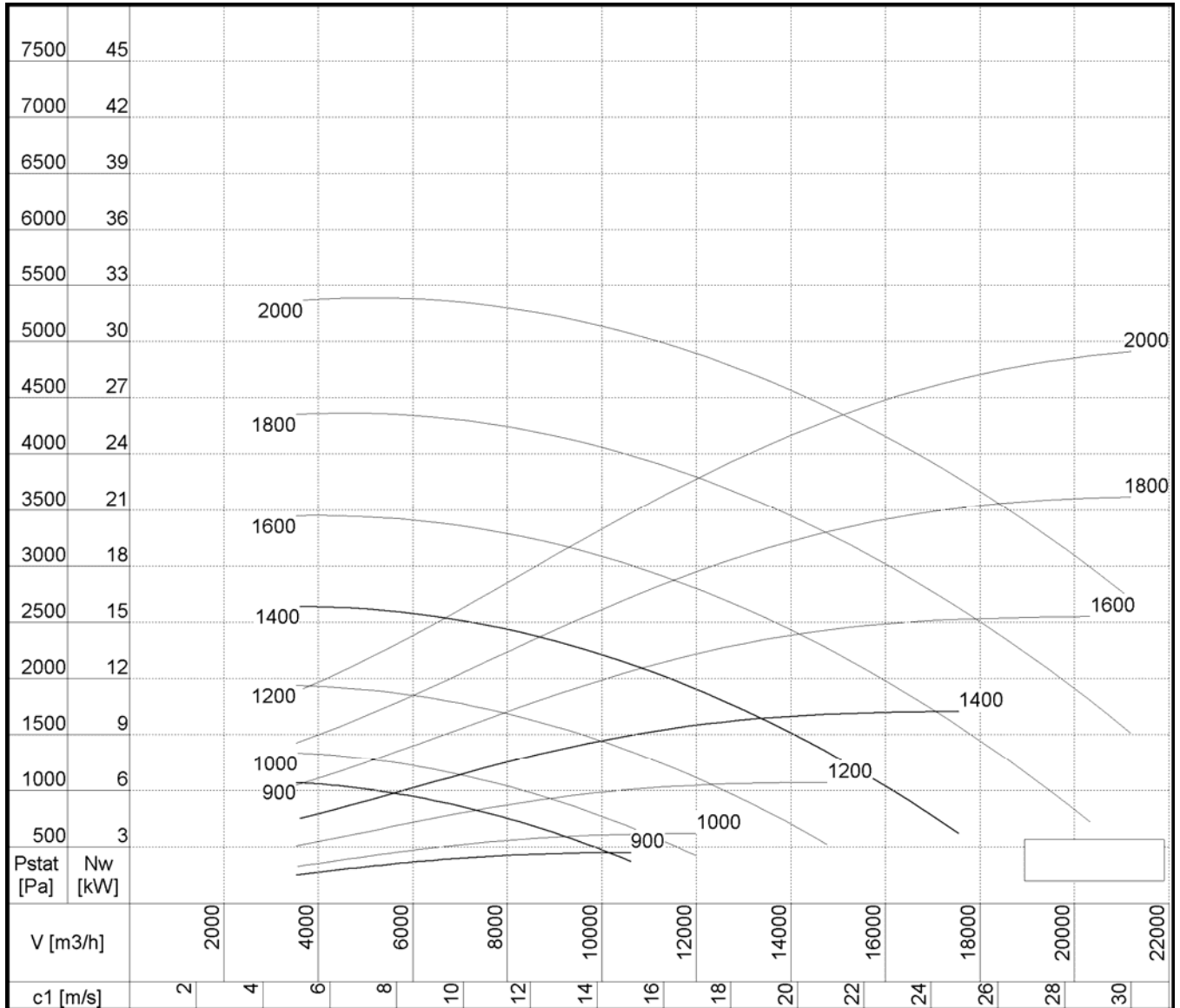




Sound power level L_{wA} dB(A) **Sound pressure $L_{pA} = L_{wA} - 7$ dB(A)** **Dist. 1 m**
 ISO 5136.2

n	L_{wA} dB(A)	Hz							
		63	125	250	500	1000	2000	4000	8000
min -1									
1000	79	62	69	75	74	70	62	56	49
1200	83	66	73	79	78	74	66	60	53
1400	86	69	76	82	81	77	69	63	56
1600	88	71	78	84	83	79	71	65	58
1800	91	74	81	87	86	82	74	68	61
2000	93	76	83	89	88	84	76	70	63
2200	95	78	85	91	90	86	78	72	65

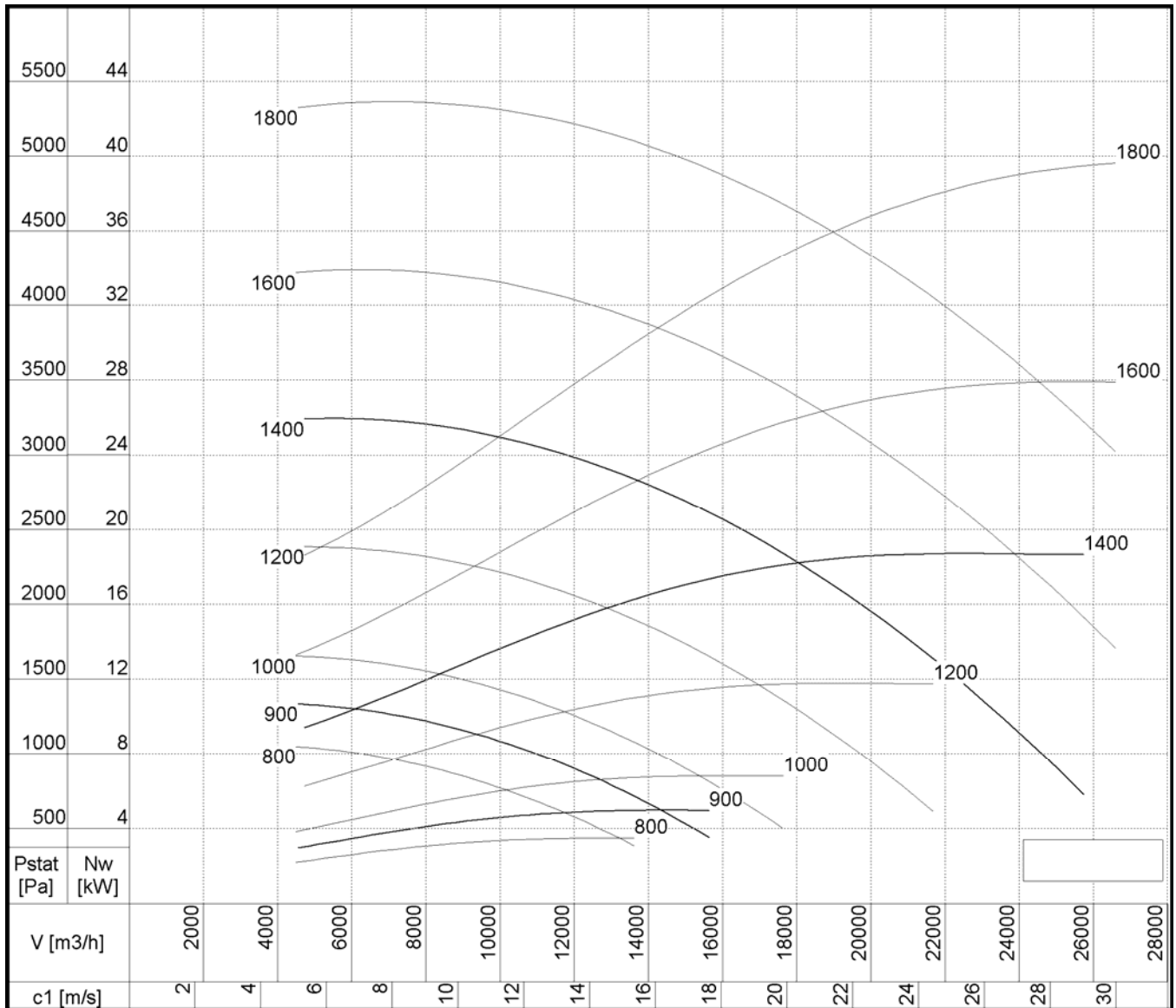




Sound power level L_{wA} dB(A) **Sound pressure $L_{pA} = L_{wA} - 7$ dB(A)** **Dist. 1 m**
 ISO 5136.2

n	L_{wA} dB(A)	Hz							
		63	125	250	500	1000	2000	4000	8000
900	79	65	70	75	72	70	59	53	46
1000	81	67	72	77	74	72	61	55	48
1200	85	71	76	81	78	76	65	59	52
1400	88	74	79	84	81	79	68	62	55
1600	90	76	81	86	83	81	70	64	57
1800	93	79	84	89	86	84	73	67	60
2000	95	81	86	91	88	86	75	69	62

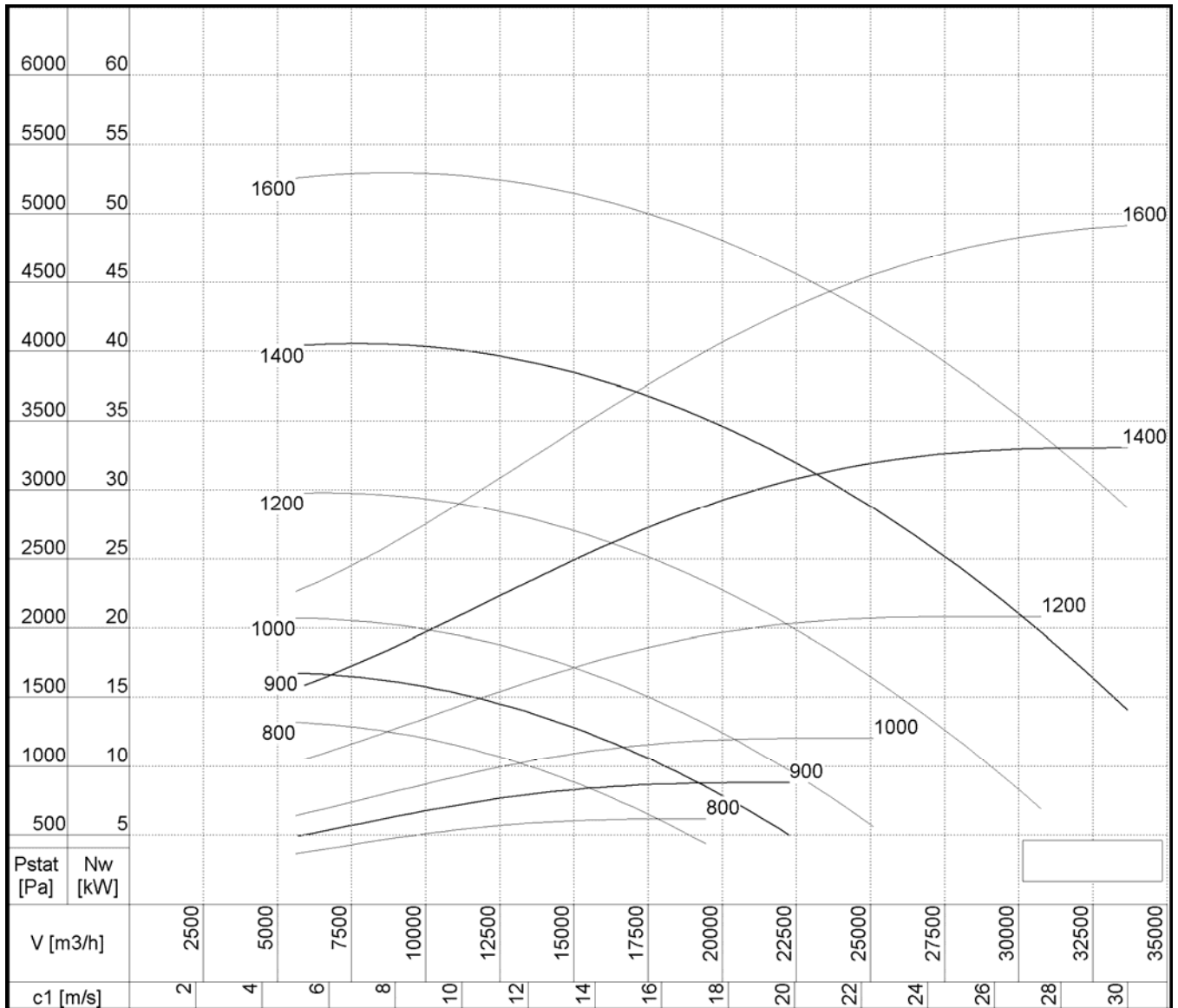




Sound power level L_{wA} dB(A) **Sound pressure $L_{pA} = L_{wA} - 7$ dB(A)** **Dist. 1 m**
 ISO 5136.2

n	L_{wA} dB(A)	Hz							
		63	125	250	500	1000	2000	4000	8000
min -1									
800	80	69	72	77	73	71	59	52	44
900	83	72	75	80	76	74	62	55	47
1000	85	74	77	82	78	76	64	57	49
1200	89	78	81	86	82	80	68	61	53
1400	92	81	84	89	85	83	71	64	56
1600	94	83	86	91	87	85	73	66	58
1800	97	86	89	94	90	88	76	69	61



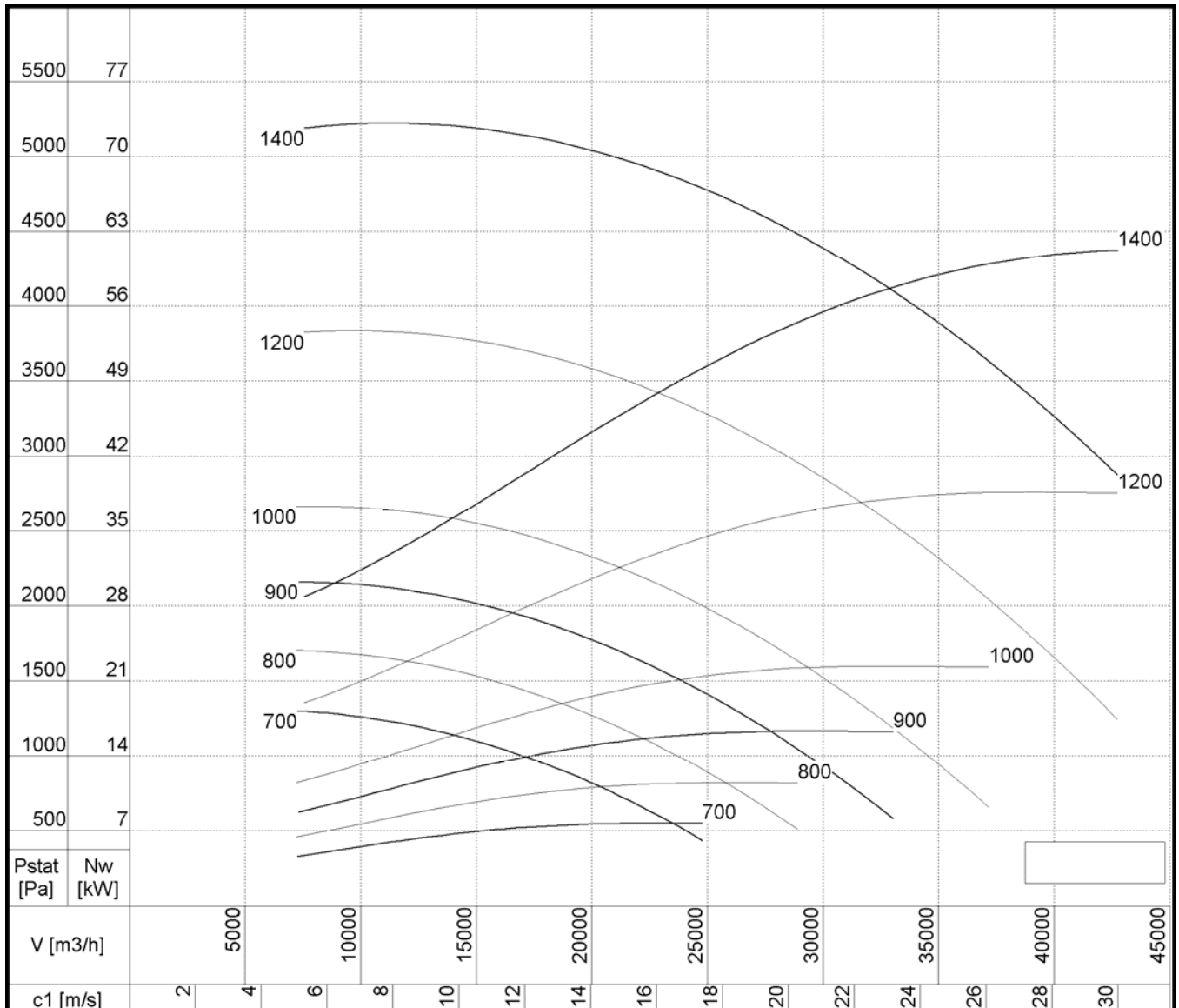


Sound power level L_{wA} dB(A) **Sound pressure $L_{pA} = L_{wA} - 7$ dB(A)** **Dist. 1 m**

ISO 5136.2

n	L_{wA} dB(A)	Hz							
		63	125	250	500	1000	2000	4000	8000
min -1									
800	83	74	75	80	75	73	60	52	44
900	86	77	78	83	78	76	63	55	47
1000	88	79	80	85	80	78	65	57	49
1200	92	83	84	89	84	82	69	61	53
1400	95	86	87	92	87	85	72	64	56
1600	97	88	89	94	89	87	74	66	58

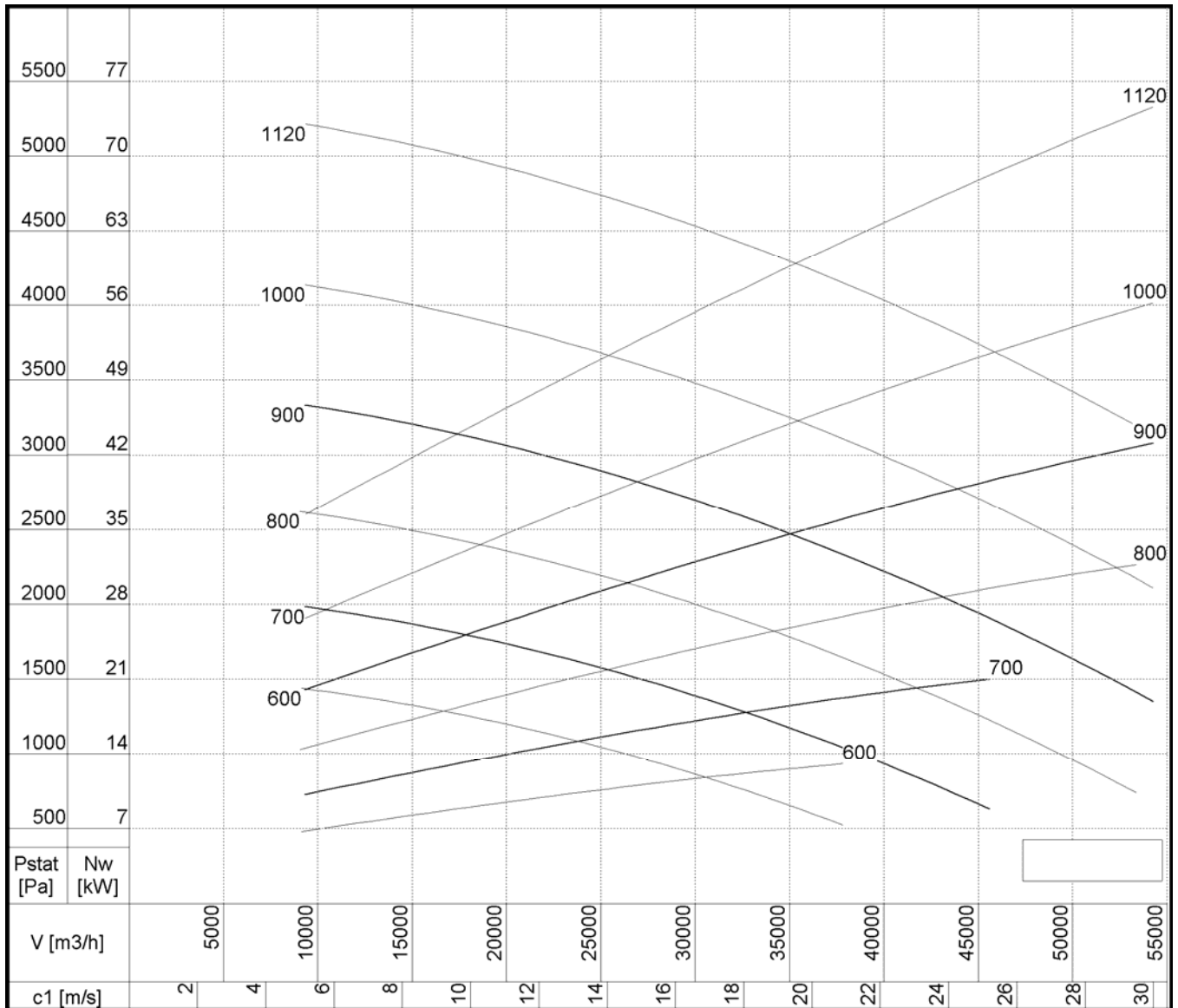




Sound power level L_{wA} dB(A) **Sound pressure $L_{pA} = L_{wA} - 7$ dB(A)** **Dist. 1 m**
 ISO 5136.2

n	L_{wA} dB(A)	Hz							
		63	125	250	500	1000	2000	4000	8000
min -1									
700	84	63	73	79	80	76	70	66	59
800	87	66	76	82	83	79	73	69	62
900	90	69	79	85	86	82	76	72	65
1000	92	71	81	87	88	84	78	74	67
1200	96	75	85	91	92	88	82	78	71
1400	99	78	88	94	95	91	85	81	74

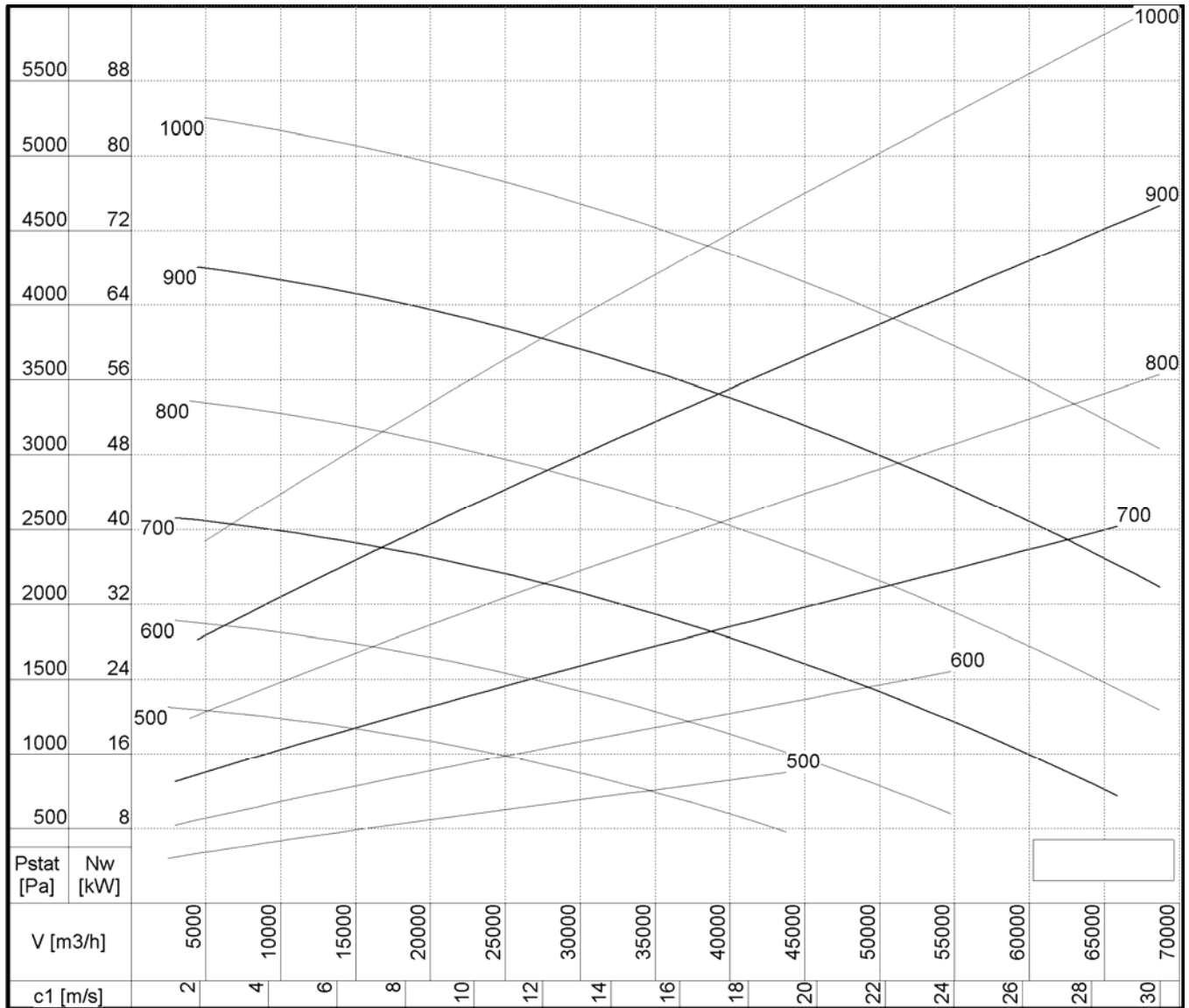




Sound power level L_{wA} dB(A) **Sound pressure $L_{pA} = L_{wA} - 7$ dB(A)** **Dist. 1 m**
 ISO 5136.2

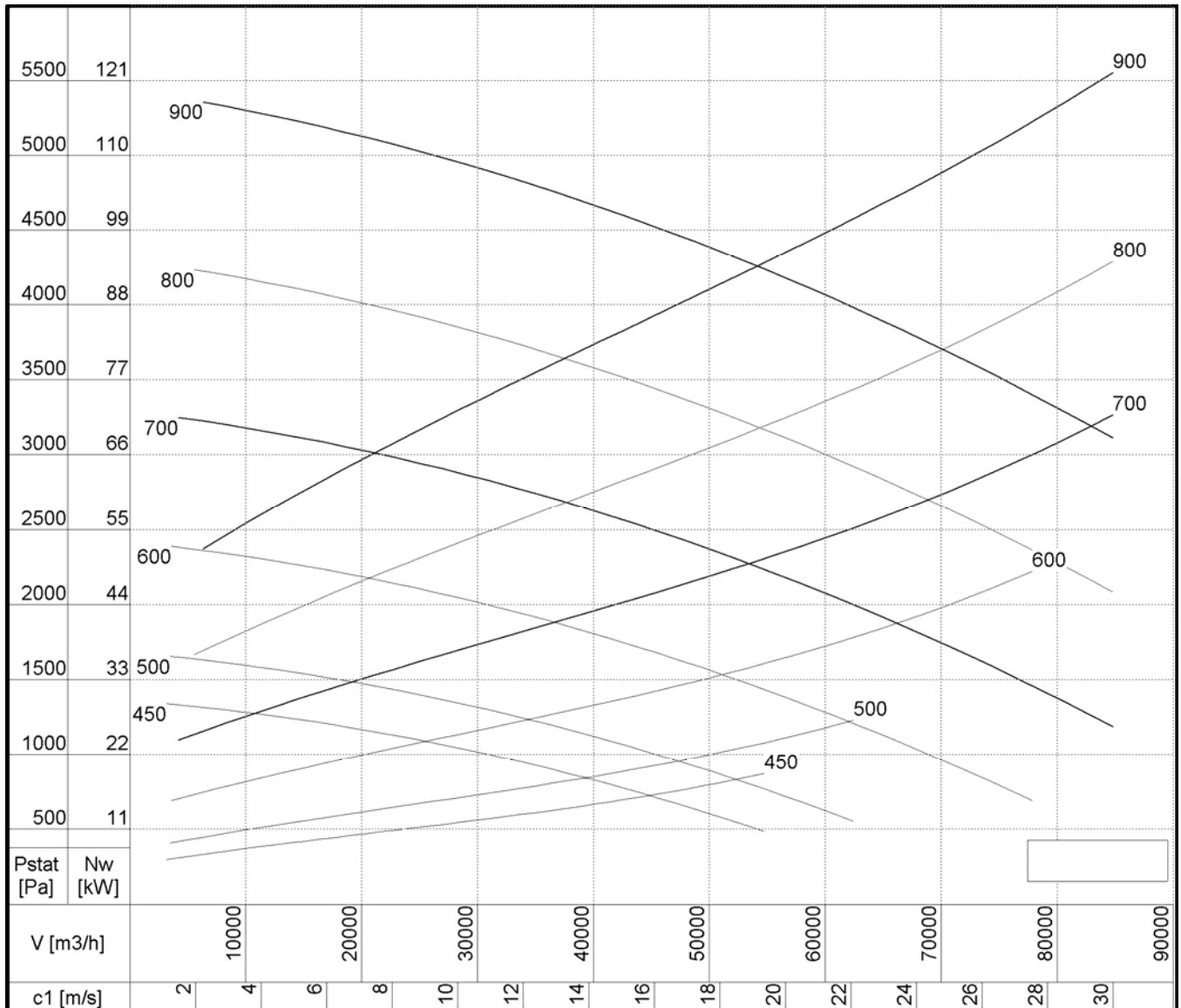
n	L_{wA} dB(A)	Hz							
		63	125	250	500	1000	2000	4000	8000
min -1									
600	85	64	74	80	81	77	71	67	60
700	88	67	77	83	84	80	74	70	63
800	91	70	80	86	87	83	77	73	66
900	94	73	83	89	90	86	80	76	69
1000	96	75	85	91	92	88	82	78	71
1120	99	78	88	94	95	91	85	81	74





Sound power level L_{wA} dB(A)		Sound pressure $L_{pA} = L_{wA} - 7$ dB(A)								Dist. 1 m
ISO 5136.2										
n	L_{wA}	Hz								
min -1	dB(A)	63	125	250	500	1000	2000	4000	8000	
500	85	64	74	80	81	77	71	67	60	
600	89	68	78	84	85	81	75	71	64	
700	92	71	81	87	88	84	78	74	67	
800	95	74	84	90	91	87	81	77	70	
900	98	77	87	93	94	90	84	80	73	
1000	100	79	89	95	96	92	86	82	75	

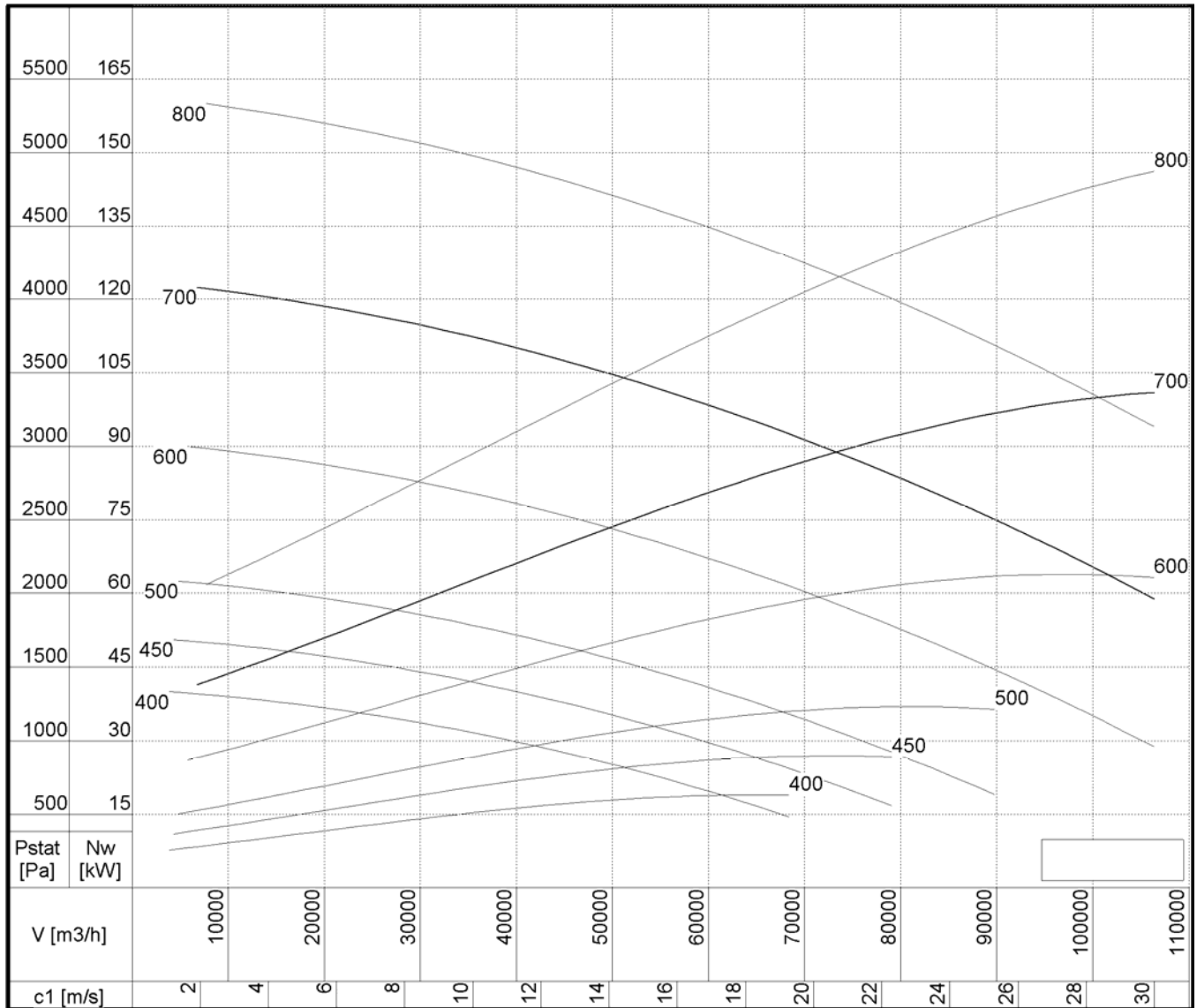




Sound power level L_{w_A} dB(A) **Sound pressure $L_{p_A} = L_{w_A} - 7$ dB(A)** **Dist. 1 m**
 ISO 5136.2

n	L_{w_A} dB(A)	Hz							
		63	125	250	500	1000	2000	4000	8000
min -1									
450	86	65	75	81	82	78	72	68	61
500	88	67	77	83	84	80	74	70	63
600	92	71	81	87	88	84	78	74	67
700	95	74	84	90	91	87	81	77	70
800	98	77	87	93	94	90	84	80	73
900	101	80	90	96	97	93	87	83	76

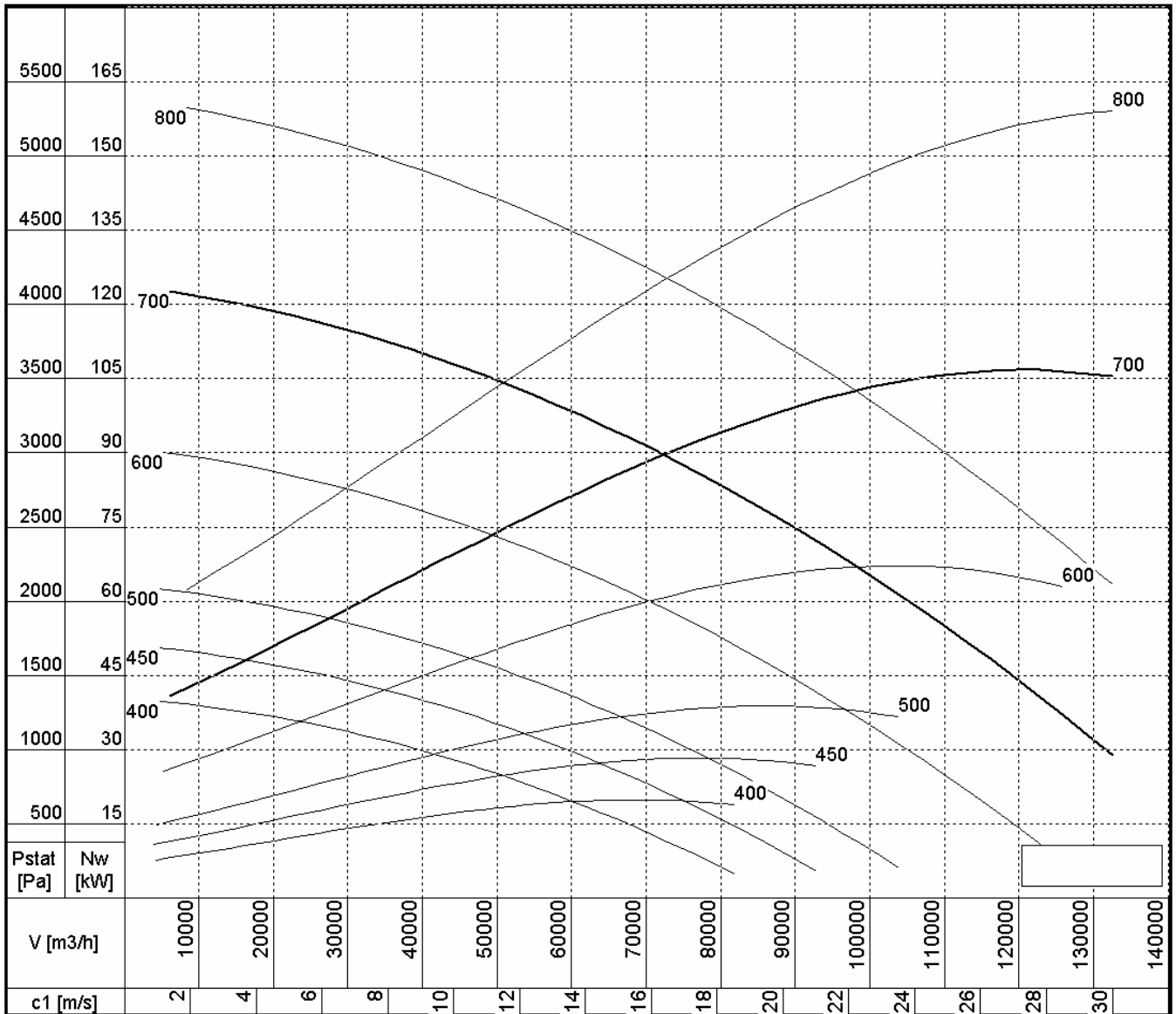




Sound power level L_{wA} dB(A) **Sound pressure $L_{pA} = L_{wA} - 7$ dB(A)** **Dist. 1 m**
 ISO 5136.2

n	L_{wA} dB(A)	Hz							
		63	125	250	500	1000	2000	4000	8000
min -1									
400	88	66	76	82	83	79	83	69	62
450	91	69	79	85	86	82	86	72	65
500	93	71	81	87	88	84	88	74	67
600	97	75	85	91	92	88	92	78	71
700	100	78	88	94	95	91	95	81	74
800	103	81	91	97	98	94	98	84	77





Sound power level L_{wA} dB(A) **Sound pressure $L_{pA} = L_{wA} - 7$ dB(A)** **Dist. 1 m**
 ISO 5136.2

n	L_{wA} dB(A)	Hz							
		63	125	250	500	1000	2000	4000	8000
min -1									
400	88	66	76	82	83	79	83	69	62
450	91	69	79	85	86	82	86	72	65
500	93	71	81	87	88	84	88	74	67
600	97	75	85	91	92	88	92	78	71
700	100	78	88	94	95	91	95	81	74
800	103	81	91	97	98	94	98	84	77

